

# HYDRAULIC EASY PULLERS

**POWERRAM**  
HYDRAULIC TOOLS

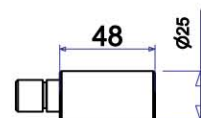
The first 2/3 way Hydraulic Easy Puller in the world !



Puller Assembled Package

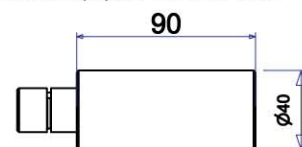


B1128



Extension Rod for 4, 6, 8 & 12 Tons Pullers

B1129



Extension Rod for 20 & 30 Tons Pullers

## USER-CONVENIENTLY

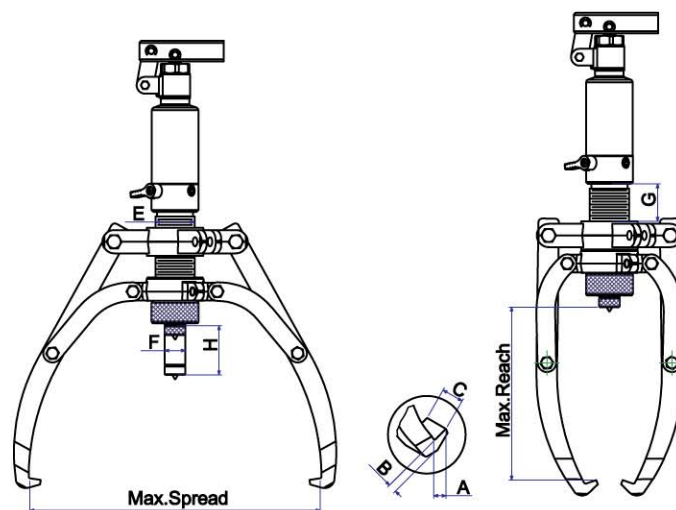
- Made of fast-acting and self-positioning jaws which is absolutely user-friendly for operating with just one person needed.
- 360° Rotary Handle socket enables the user to operate the pumping in all directions.
- Attached extension rods allow the user to extend the stroke according to the needs.
- User-Friendly package with the well assembled puller inside for immediately operating and easily put away after objects pulled out.

## SAFE

- The self-contained Hydraulic pump equipped with the built-in safety valve is designed to prevent the overload to the puller.
- Self-locking jaws prevent the puller jaw from slipping off under loading and/or hydraulic force releasing.

## COST SAVING

- Assembled packaging conveniently positioning and efficiently pulling help to save much on manpower and operating time.
- The first 2 / 3 way Hydraulic Easy Puller brings the users the best option for much cost saving.



## SPECIFICATIONS

Capacity	Model No.	Reach (Max. mm)	Spread (Max. mm)	Stroke (mm)		Pump Tip (mm)			Jaw Tip (mm)			Weight (kg)
				H		E	F	G	A	B	C	
4 Ton	PME400	190	315	60		42	22	40	13	10	22	8.0
6 Ton	PME600	230	390	70		45	23	50	13	10	22	9.8
8 Ton	PME800	280	460	85		50	25	70	13	13	27.5	11.7
12 Ton	PME1200	300	515	85		60	28	70	15	16.5	29	14.8
20 Ton	PME2000	325	520	111		80	40	62	18	20	33	25.7
30 Ton	PME3000	415	620	111		98	50	85	18	20	38	36.0

Patented in USA, Germany, Taiwan, P.R.C.....etc.

# HYDRAULIC PULLERS

**POWERRAM**  
HYDRAULIC TOOLS

## MODEL:PM SERIES

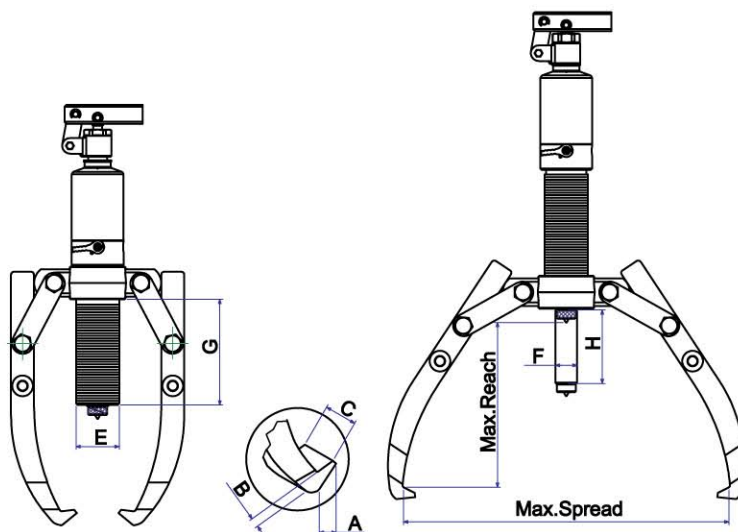


### FEATURES

- Exchangeable 2 or 3 arm combination puller is very practical and economical.
- 360° Rotary Socket.
- Self-contained hydraulic pump and puller body with integral safety valve.
- Spring loaded live centering nut for easy job (removable).
- Four stages of foldable & removable handle saves the handle force during operation.
- Patented design of two stages stroking for PM2000 & PM3000, the first stage being as fast stroking for quickly connecting with object, and the second stage being as high hydraulic output for pulling job.
- The extension bars can be used where necessary for extra reach.



Optional longer Jaw  
Part No.C0948 for PM400  
Part No.C0949 for PM600  
Part No.C0950 for PM800  
Part No.C0951 for PM1200  
Part No.C0960 for PM2000  
Part No.C0961 for PM3000



### SPECIFICATIONS

Capacity	Model No.	Reach (Max. mm)	Spread (Max. mm)	Stroke (mm)	Pump Tip (mm)				Jaw Tip (mm)			Weight (kg)
				H	E	F	G	A	B	C		
4 Ton	PM400	185	255	60	42	22	84	11	6	22	4.5	
6 Ton	PM600	220	330	70	45	23	94	13	10	22	5.5	
8 Ton	PM800	230	350	85	50	25	122	11	10	25	6.5	
12 Ton	PM1200	270	375	85	60	28	118	14	10	29	8.0	
20 Ton	PM2000	360	520	111	80	40	160	20	27	33	22	
30 Ton	PM3000	360	550	111	98	50	155	20	27	38	32	