

**NEW
PRODUCT**

BATTERY OPERATED TOOLS

■ Model No. **LEC-44TAR** (with Li-ion Battery & Charger)

Length : 389 mm (w/o battery)
Height : 317 mm (w/o battery)
Weight : 6.9 kgs (w/o battery)



■ Specifications:

Drive unit : 18V DC Motor
Charger (GS/CE) :
Input voltage : 110V Single Phase AC
Input voltage : 230V Single Phase AC
Input frequency : 50-60 Hz
Input current : 21.75 VA
Reservoir capacity : 120 cc

■ Crimping Capacity:

Jaw opening : 44 mm
Max. Pressure : 700 bar
Crimping force : 14.01 tons / 124.6 kN
Main Application : Up to 400mm² CU
Dies sold separately
(CU 16/25/35/50/70/95/120/150/185/240/300/400)

※ Auto-return function, which creates a one-button operating concept for using the tool.



Accepts all dies used by Alcoa, Burndy, T&B, Klauke, Cembre and Blackburn 12 ton U-type dies. Suitable for TERMINALS with wall thickness little less than DIN 46235 cable lugs.



※ Crimping without die sets is prohibited.

**NEW
PRODUCT**

BATTERY OPERATED TOOLS

KuDos®
Professional Hydraulic Tools.

NEW

■ Model No. **LEC-6AR** (with Li-ion Battery & Charger)

Length : 401 mm (w/o battery)

Height : 301 mm (w/o battery)

Weight : 5.7 kgs (w/o battery)

■ Specifications:

Drive unit : 18V DC Motor

Charger (GS/CE) :

Input voltage : 110V Single Phase AC

Input voltage : 230V Single Phase AC

Input frequency : 50-60 Hz

Input current : 21.75 VA

Reservoir capacity : 120 cc

■ Crimping Capacity:

Jaw opening : 36 mm

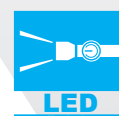
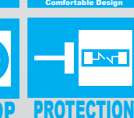
Max. Pressure : 700 bar

Crimping force : 7.03 tons / 62.5 kN

Main Application :

Anderson type connectors up to 500 MCM

※ Auto-return function, which creates a one-button operating concept for using the tool.



**NEW
PRODUCT**

BATTERY OPERATED TOOLS

KuDos®
Professional Hydraulic Tools.

NEW

■ Model No. **LEC-32TAR** (with Li-ion Battery & Charger)

Length : 405 mm (w/o battery)

Height : 308 mm (w/o battery)

Weight : 6.2 kgs (w/o battery)

■ Specifications:

Drive unit : 18V DC Motor

Charger (GS/CE) :

Input voltage : 110V Single Phase AC

Input voltage : 230V Single Phase AC

Input frequency : 50-60 Hz

Input current : 21.75 VA

Reservoir capacity : 120 cc

■ Crimping Capacity:

Jaw opening : 32 mm

Max. Pressure : 700 bar

Crimping force : 14.01 tons / 124.6 kN

Main Application : Up to 400mm² CU

Dies sold separately

(CU 16/25/35/50/70/95/120/150/185/240/300/400)

※ Auto-return function, which creates a one-button operating concept for using the tool.



Accepts all dies used by Alcoa, Burndy, T&B, Klauke, Cembre and Blackburn 12 ton U-type dies. Suitable for TERMINALS with wall thickness little less than DIN 46235 cable lugs.



HEXAGONAL



TERMINAL



C-CONNECT



SPEED DELIVERY



MANUAL



MAINTAIN



PROTECTION



PROTECTION



EASY



SKIDPROOF



180°



RELOAD



BATTERY



PROTECTION



AUTO STOP



PROTECTION

※ Crimping without die sets is prohibited.



LED

18V

Illumination

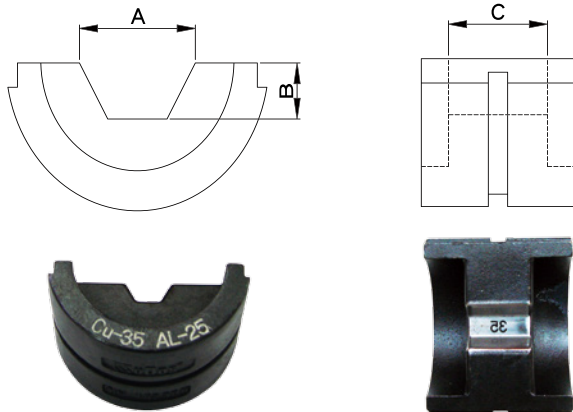
Long-term Power

CRIMPERS DIES

- For LEC-U27, LEC-32T, LEC-40T, LEC-44T, UB-400(HE), UCP-2712(HE), UB-413T(THE), UB-412S, UB-412T(THE), H-412THE, HYCP-4413T(THE), ADP-15THE, ADP-630HE, ADP-451000HE

• Hex Dies for Copper Lugs

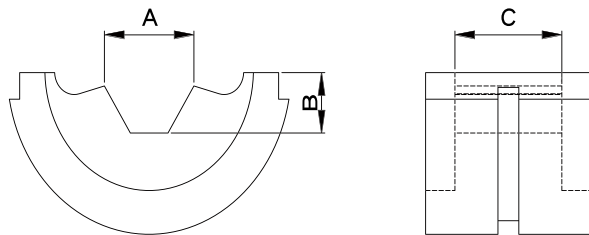
Suitable for TERMINALS with wall thickness little less than DIN 46235 Cable Lugs



Unit: mm

Die No.	A	B	C
CU-16	7.20	3.12	14.00
CU-25	8.43	3.67	14.00
CU-35	10.00	4.33	16.00
CU-50	11.60	5.02	16.00
CU-70	13.70	5.95	15.60
CU-95	15.90	6.85	15.70
CU-120	17.98	7.79	16.00
CU-150	20.10	8.70	15.00
CU-185	22.33	9.67	14.00
CU-240	25.43	11.01	13.00
CU-300	28.44	12.32	11.20
CU-400	30.00	14.55	11.50

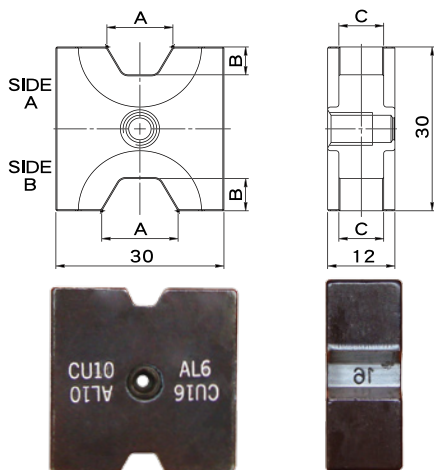
• Hex Dies for Solderless Terminals



Unit: mm

Die No.	A	B	C
CU-8-14	7.40	3.50	8.00
CU-22	8.80	4.30	10.00
CU-38	11.50	5.40	11.50
CU-60-70	13.40	6.00	15.00
CU-80	15.00	6.75	18.00
CU-100	18.00	8.00	15.00
CU-150-180	21.00	9.10	13.00
CU-200	28.44	12.32	11.20
CU-325	30.00	14.56	11.50

- For LEC-185T, LEC-240TR, K-ED10, K-185, K-240R, HYCP-185(HE), HYCP-240R(HER)



Unit: mm

Die No.	Side		A	B	C
AHE-1016	A	CU10	5.45	2.30	12.00
	B	CU16	6.80	2.85	12.00
AHE-2535	A	CU25	8.35	3.50	9.00
	B	CU35	9.40	4.00	9.00
AHE-5070	A	CU50	11.35	4.80	9.00
	B	CU70	13.80	6.05	9.00
AHE-95120	A	CU95	16.17	6.90	9.00
	B	CU120	18.05	7.60	9.00
AHE-150	A	CU150	20.15	8.55	6.00
AHE-185	A	CU185	22.15	9.35	6.00
AHE-240	A	CU240	24.15	9.70	6.00

- AHE-240 Die For 240 Series Only.

■ Model No. **LEC-45X** (with Li-ion Battery & Charger)

Weight : 4.7 kgs (w/o battery, w/o any head)

■ Specifications:

Drive unit : 18V DC Motor
Charger (GS/CE) :
Input voltage : 110V Single Phase AC
Input voltage : 230V Single Phase AC
Input frequency : 50-60 Hz
Input current : 21.75 VA
Reservoir capacity : 120 cc

■ Crimping Capacity:

LEC-45X can be transformed with 6 different adapter heads as Cable Cutter \ Puncher \ Crimper \ Bus Bar Cutter \ Nut Splitter \ Puncher.

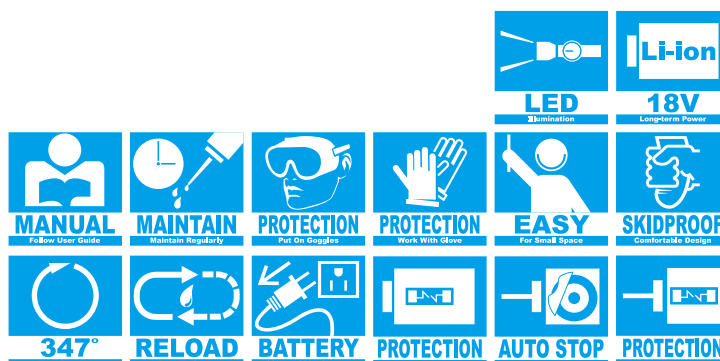
Max. Pressure : 700 bar

Max Output : 14.01 tons / 124.6 kN

Ram Stroke : 44 mm



※ 6 ADAPTER HEADS ARE SOLD SEPARATELY



■ Model No. **LEC-44X / LEC-45X (Related heads)**

44AT-Hex (Hex. Crimping Head Adapter)

Main Application : 10-400 mm²
Die sold separately : 16, 25, 35, 50, 70, 95, 120,
150, 185, 240, 300, 400 mm²
Accept all 12 tons die sets



44AT-50AP (Panel Punching Head Adapter)

Punching Capacity :
Mild Steel Panel thickness : 7 mm / Dia : 17.5 mm
Copper Panel thickness : 7 mm / Dia : 20.5 mm
Included Round Punching Die Sets :
10.5, 13.5, 17.5, 20.5 mm each set for mild steel.
**Die sets for copper panel sold separately.



44AT-NC36 (Nut Splitter Head Adapter)

Bolt Range : M10~M24
Hex. Nut Range : 16~36 mm



44AT-50AC (Angle Steel Cutter Head Adapter)

Max. Width : 50 mm
Max. Thickness : 6 mm



44AT-SC40 (Cable Cutter Head Adapter)

Cutting Capacity
ACSR : 40 mm
Copper : 44 mm



44AP-MM36 (Nut Splitting Head)

Bolt Range : M10~M26
Hex. Nut Range : 36 mm

