



Roller crowbar WRC series



* A lever bar of strong steel tube on two smooth running steel rollers.

Model	WRC15	WRC50
Load capacity	15	5
Length	2000	2000
Max.Skate Height	145	145
Rollers dimensions	Ø75×55	Ø70×54
Net weight	13	30

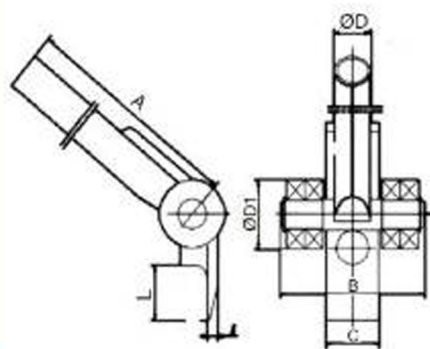
Roller crowbar WRCII series

Model	WRCII-5
Load capacity	5
Length	1524
Width	165
Roller diameter	Ø76
Net weight	13



* A safe and essential tool for storage depots, freight terminals, engineering shops and most factories. Ideal for lifting, shifting and positioning of awkward loads.

Roller crowbar WJO series



Model		WJO-3	WJO-5
Capacity	t	3	5
Dimensions	A	1400	1530
	B	136	155
	C	50	65
	D	34	38
	L	46	55
	D1	62	72
	t	11	13
Net weight	kg	8	11